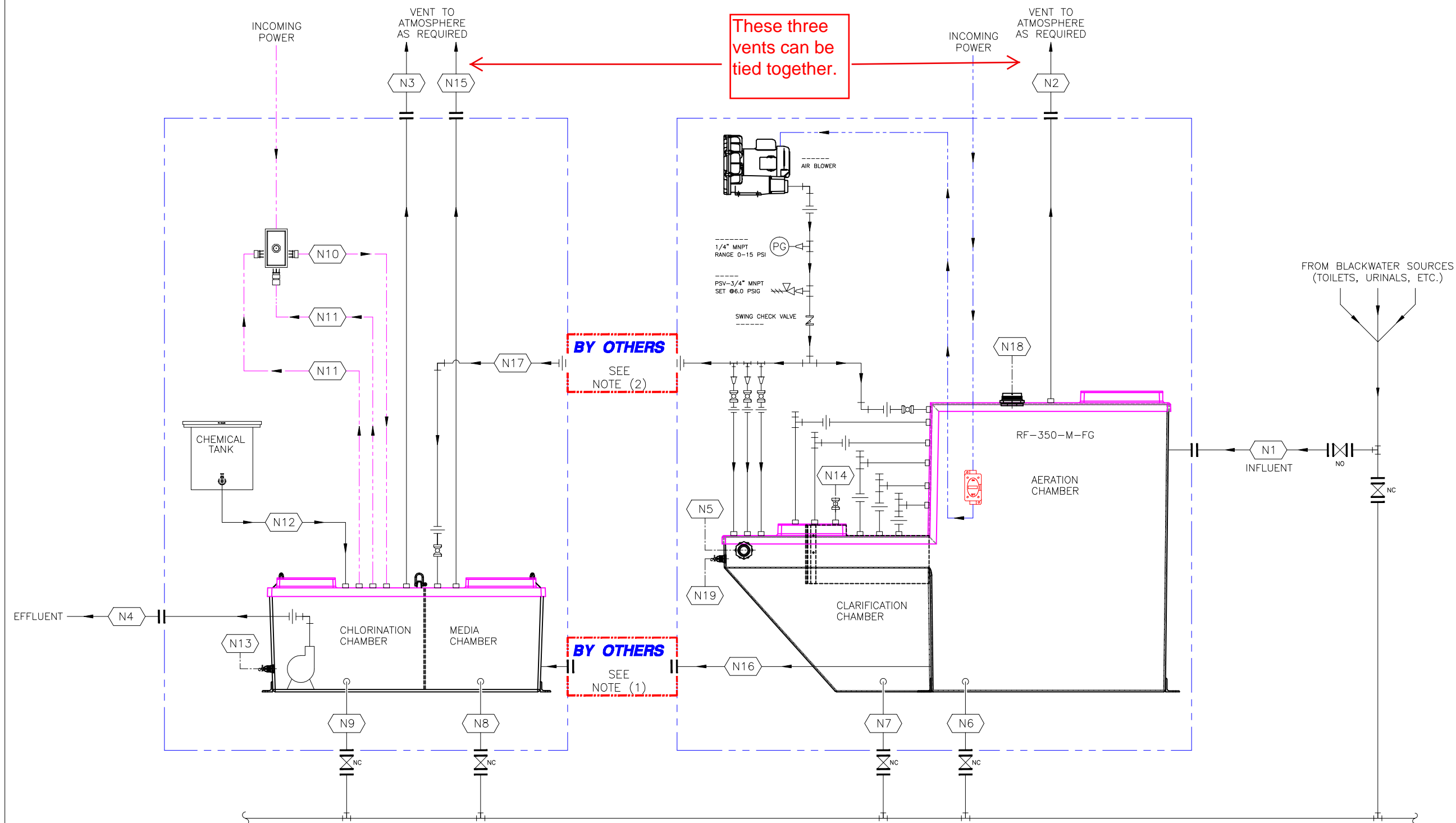
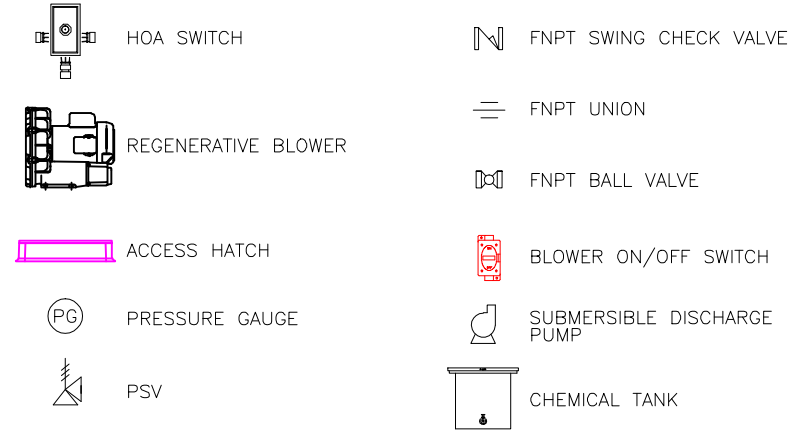


MARK	DESCRIPTION
N1	BLACKWATER INLET - 4" 150# FNPT
N2	AERATION CHAMBER VENT - 3" 150# FNPT
N3	CHLORINATION CHAMBER VENT - 1 1/2" 150# FNPT
N4	TREATED LIQUIDS PUMP DISCHARGE - 2" 150# FNPT
N5	CROSSOVER MANIFOLD CLEANOUT - 2" 150# FNPT
N6	AERATION CHAMBER DRAIN - 2" 150# FNPT
N7	CLARIFICATION CHAMBER DRAIN - 2" 150# FNPT
N8	MEDIA CHAMBER DRAIN - 2" 150# FNPT
N9	CHLORINATION CHAMBER DRAIN - 2" 150# FNPT
N10	SUBMERSIBLE DISCHARGE PUMP CABLE CONNECTION - 1/2" 150# FNPT
N11	FLOAT LEVEL CABLE CONNECTION (2 EA) - 1/2" 150# FNPT
N12	CHLORINE INJECTION CONNECTION - 1/2" 150# FNPT
N13	TREATED LIQUIDS SAMPLE VALVE - 3/8" 150# FNPT W/BRNZ VALVE
N14	CLARIFIER FILL/VENT - 1" FNPT W/ BRONZE BALL VALVE
N15	MEDIA CHAMBER VENT - 1 1/2" 150# FNPT
N16	AERATION CHAMBER/MEDIA CHAMBER CROSSOVER - 2" 150# FNPT
N17	MEDIA CHAMBER AIR AGITATION CLEANOUT - 1" 150# FNPT W/BRNZ VALVE
N18	CROSSOVER MANIFOLD ANTI-SYPHON CLEANOUT ACCESS PORT - 3" 150# FNPT
N19	CLARIFIED LIQUIDS SAMPLE VALVE - 1/2" 150# FNPT W/BRNZ VALVE

NOTES:

- "N16" INTERCONNECTING 2" SCH.80 PVC PIPE & FITTINGS SUPPLIED BY OTHERS. OTHERS RESPONSIBLE FOR INTERCONNECTION FABRICATION AS NECESSARY ON SITE.
- "N17" INTERCONNECTING 1" SCH. 40 316 SS PIPE & FITTINGS SUPPLIED BY OTHERS. OTHERS RESPONSIBLE FOR INTERCONNECTION FABRICATION AS NECESSARY ON SITE.

LEGEND



ENVIRONMENTAL SERVICES, INC.
 This drawing is the exclusive property of: RED FOX ENVIRONMENTAL SERVICES, INC..
 It is furnished on a confidential basis. No portion of this drawing may be copied, traced,
 photographed or in any other way reproduced; nor may any item hereon depicted be
 manufactured or shown without the written consent of: **redFox**

MODEL: RF-350-M-FG
 MARINE SANITATION DEVICE TYPE II
 U.S.C.G. CERTIFICATION NUMBER: 159.015/10136/0



PROJECT NUMBER: RF-350-M-FG		DATE: JUN/30/2014	SCALE: NONE	REV. NO. 001
PROJECT ENGINEER: JDE	DRAWN BY: BMR	DATE: JUN/30/2014	SCALE: NONE	REV. NO. 001
PROJECT NUMBER: RF-350-M-FG	DRAWING NUMBER: RF-350-M-FG	DATE: JUN/30/2014	SCALE: NONE	REV. NO. 001
<p>redFox ENVIRONMENTAL SERVICES, INC.</p> <p>RED FOX RF-350-M-FG STANDARD WITH PUMP DISCHARGE GENERAL ARRANGMENT</p>				
<p>PRELIMINARY LAYOUT - FOR SHELL MOLD DISCUSSIONS ONLY - DO NOT BUILD</p>				<p>DATE: 06/30/14</p>
<p>REVISION DESCRIPTION (LATEST REVISION INDICATED BY RED TRIANGLE)</p>				<p>DWG. BY: BMR</p> <p>JDE</p> <p>APRVD:</p>